

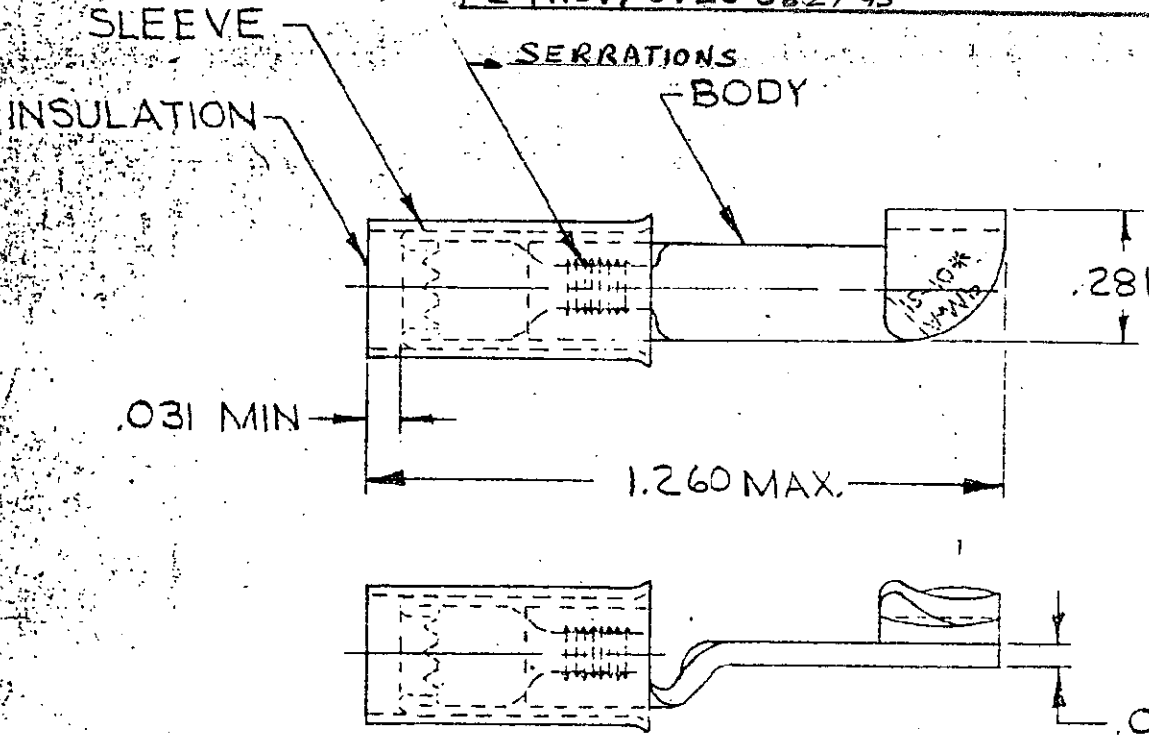
DRAWING MADE IN AMERICAN PROJECTION

LOC G 14 PRINT DIST

© 1949 BY AMP INCORPORATED, ALL RIGHTS RESERVED. AMP PRODUCTS COVERED BY PATENTS AND/OR PATENTS PENDING.

REVISIONS

LTR	DESCRIPTION	DATE	APPROVED
B	REDRAWN PER REV. P-6080	5-15-70	me
C	REV PER G-4732	7-26-88	PJD
D	REV / 0720-0036-93	3-8-93	me
E	REV / 0720-0827-95	ME 12	me



FOR .150 TO .250 WIRE INSULATION DIA.

QTY	DESCRIPTION	PART NO	MATERIAL & FINISH
50	LOOSE PC. BOX	8-35762-2	
1	WIRE TERMINAL	35762	INSULATION: NYLON COLOR: YELLOW SLEEVE: COPPER (QQ-C-576) BODY: COPPER (QQ-C-576) TIN PL (MIL-T-10727)
2500	PC. ON TAPE	2-35762-3	

UNLESS OTHERWISE SPECIFIED DIMENSIONS ARE IN INCHES
TOLERANCES ON:
DECIMALS ±.008
ANGLES ± 5°

CONTRACT NO. — H —
DR. M. J. L. 5-14-70
CHKD. *Am* 5-15-70
APPD. *Swabel* 5-15-70
REL. *H. Young* 5-18-70
DSCR APPD.
OTHER APPD.



AMP INCORPORATED
HARRISBURG, PENNSYLVANIA

NAME
WIRE TERMINAL
PIDG - KNIFE-DISCONNECT
WIRE SIZE: 12-10

SIZE CODE IDENT NO. NAME
A 00779 35762

MATERIAL
SEE TABLE

SCALE NTS SHEET 1 OF 1